

THE ECONOMIC INDICATORS OF EAST AFRICA COMMUNITY 2022

UGANDA | KENYA | TANZANIA | BURUNDI | DEMOCRATIC
REPUBLIC OF CONGO (DRC) | RWANDA | SOUTH SUDAN



EVIDENCE AND
METHODS LAB

Published by Evidence and methods lab
Plot 13, Kenneth Dale Lane
Website: www.evidenceandmethodslab.org
January 2022

All rights reserved: No part of this publication may be reproduced, stored in a retrieval system or transmitted in any form or by any means electronic, mechanical, photocopying, recording or otherwise without prior written permission of the publisher.

Reproduction or use of this publication for academic or charitable purposes or for informing public policy is exempted from this general restriction.

ISBN 978-9913-628-44-0



9 789913 628440

ACKNOWLEDGEMENTS.

The East African Community (EAC) is a regional intergovernmental organization that comprises of six countries: Kenya, Uganda, Tanzania, Rwanda, Burundi, South Sudan, and Democratic Republic of Congo. Revived in 2000, today the EAC is one the major regional blocs on the African continent and superintends over some of the continent's fastest growing economies.

This report examines economic performance of the six EAC countries and provides an overview of their current situation across different areas. These include economic growth, the factors behind it, and the potential opportunities for further development. Overall, the report provides a comprehensive overview of the economic performance of the community's member states. By simplifying the current economic situation of the EAC countries, we hope readers will find it easier to understand and make informed investment decisions and policies.

We acknowledge the staff of Evidence and Methods Lab (EML) especially Ruth Aber, Ruth Nalunkuuma, Godwin Toko, Henry Kiragga, and Michael Katagaya for their intellectual support in the data collection and analysis behind this report. We also acknowledge the contribution of the design team especially Ephraim Kiryankusa, Adrian Aturinda, and Isaac Tom Okiria without whose effort this report would not see the light of day.

We have done everything to verify that the data across been across-different data sources. We are certain that the publication provides the most accurate representation of relevant facts. We do, however, accept responsibility for any inaccuracies or omissions

Sources

[Kenya National Bureau of Statistics](#)

[National Bureau of Statistics Tanzania](#)

[Rwanda Revenue Authority](#)

[Bank of Tanzania](#)

[National Institute of Statistics Rwanda](#)

[Bank of the Republic of Burundi](#)

[National Bank of Rwanda](#)

[South Sudan National Bureau of Statistics](#)

[Institute of Statistics and Economic Studies Burundi](#)

[Central Bank of Kenya](#)

[Uganda National Bureau of Statistics](#)

[Bank of Uganda](#)

[Uganda Revenue Authority](#)

[The National Treasury and Planning Kenya](#)

[World bank](#)

[International Monetary Fund](#)

[USAID-United States Agency for International Development](#)

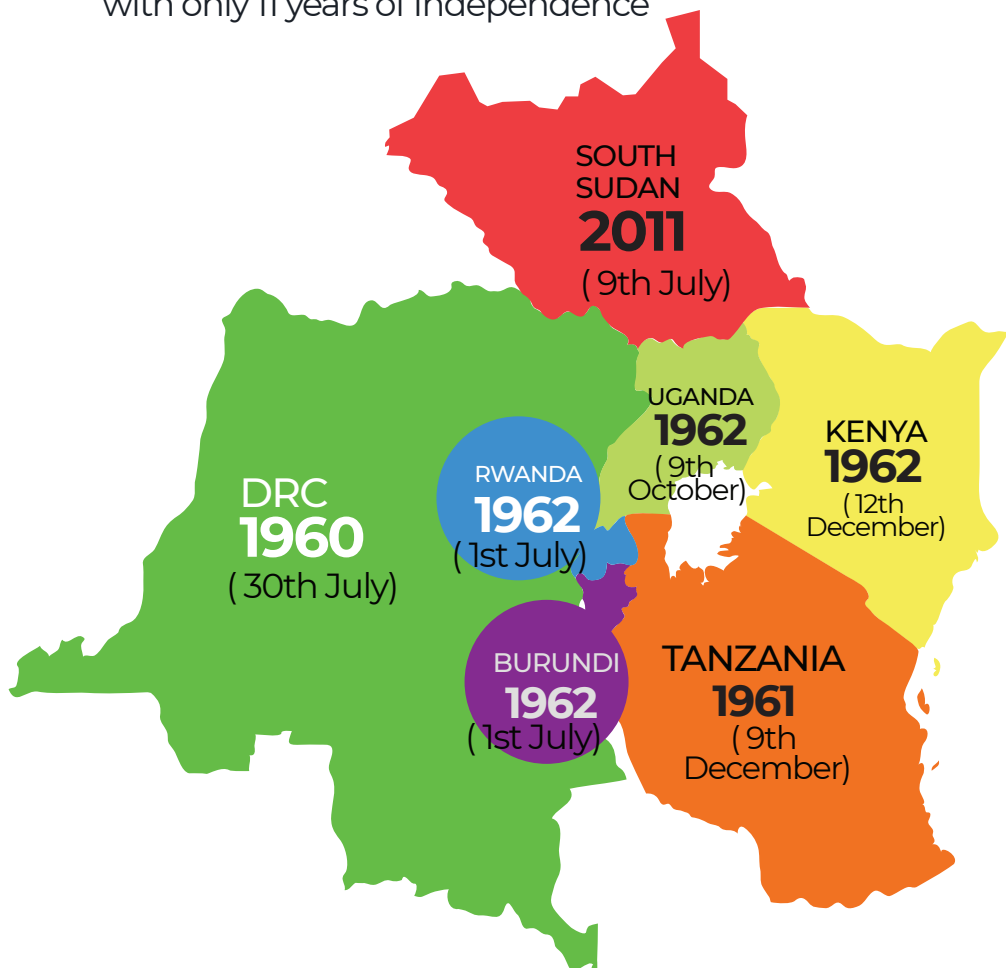
Contents

Acknowledgements.	ii
Sources	iii
Years Of Independence	1
Current Presidents Of East Africa Community	2
Total National Budget In Billion	3
National Currency	4
Population	5
Gross Domestic Product (Gdp)	6
Agriculture's Contribution To Gdp	7
Gdp Per Capita	8
Public Debt To Gdp Ratio	9
Life Expectancy At Birth	10
Adult Literacy Rate	11
Primary School Enrollment	12
Employment To Population Ratio	13
Youth Unemployment	14
Persons Living Below The Poverty Line	15
Access To Water For Sanitation In Rural Areas	16
Connection To The National Grid	17
Access To Television	18
Access To Radio	19
Access To Internet	20
Own A Mobile Phone	21
Access To Computers	22
Access To Banking Services	23
Households In Subsistence Economy	24



Years of Independence

South Sudan is the youngest nation
with only 11 years of Independence





Presidents Of East Africa Community Countries as of 2022



UGANDA

Yoweri Kaguta
Museveni
Tibuhaburwa

Since:1986

Ugandas' Yoweri Kaguta
Museveni Tibuhaburwa is
the longest serving
President with a total of

35 YEARS



RWANDA

Paul
Kagame

Since:2000



SOUTH SUDAN

Salva Kiir
Mayardit

Since:2011



DRC

Felix
Tshisekedi

Since:2019



BURUNDI

Evariste
Ndayishimiye

Since:2020



TANZANIA

Samia Sulu
Hassan

Since:2021



KENYA

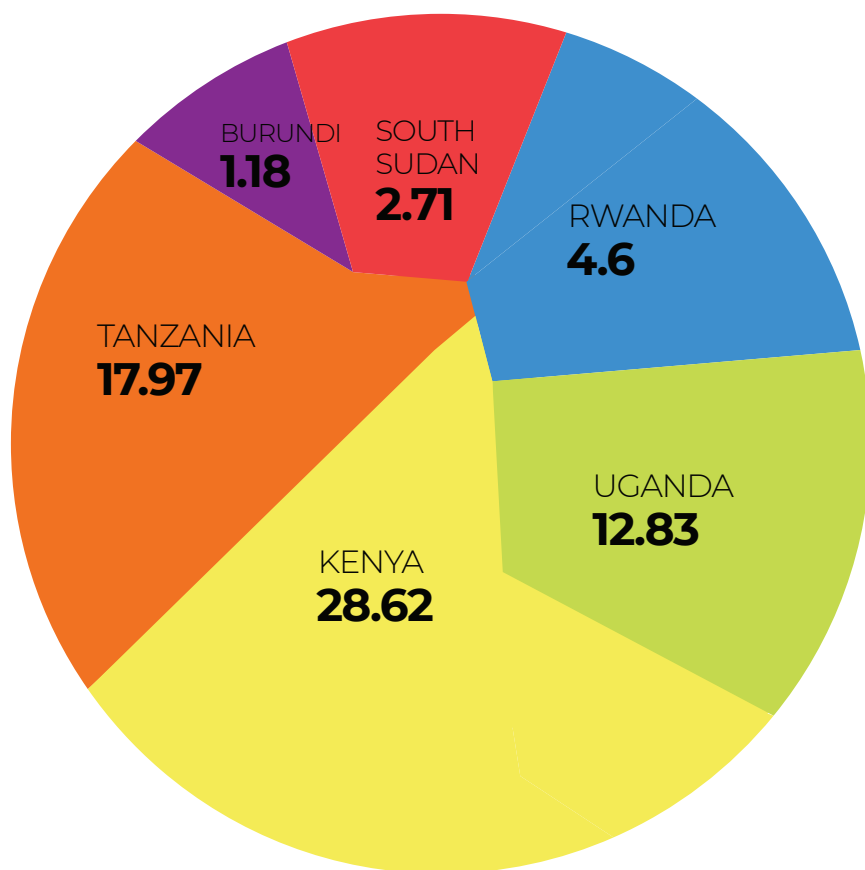
Dr William
Samoei Ruto

Since:2022

Total National Budget (\$USD) in Billion

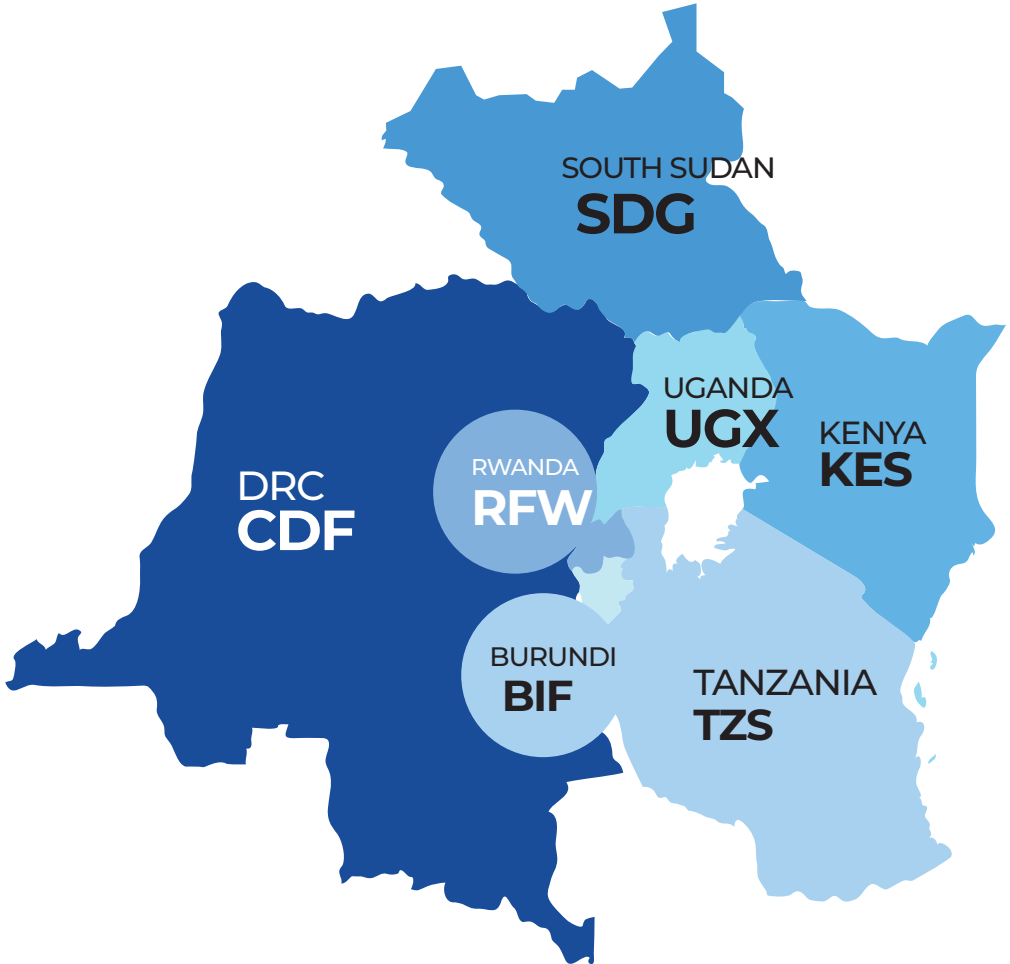
This is a plan for how the government spends taxpayer's money, and how it pays for its activities, borrowings and the repayment of its borrowings

Total National Budget is at **\$77.85Bn**



National Currency

This is the medium through which the goods or services are purchased/sold within an economy. Currency can be anything that represents value.



Population (Million)

This is the total number of people in a country.

The Average Population
of the East Africa
Community is

41.1⁺
Million
People

DRC



92.3

TANZANIA



61.4

KENYA



52.9

UGANDA



44.8

RWANDA



13.2

BURUNDI



12.3

SOUTH SUDAN



11.3

0

20

40

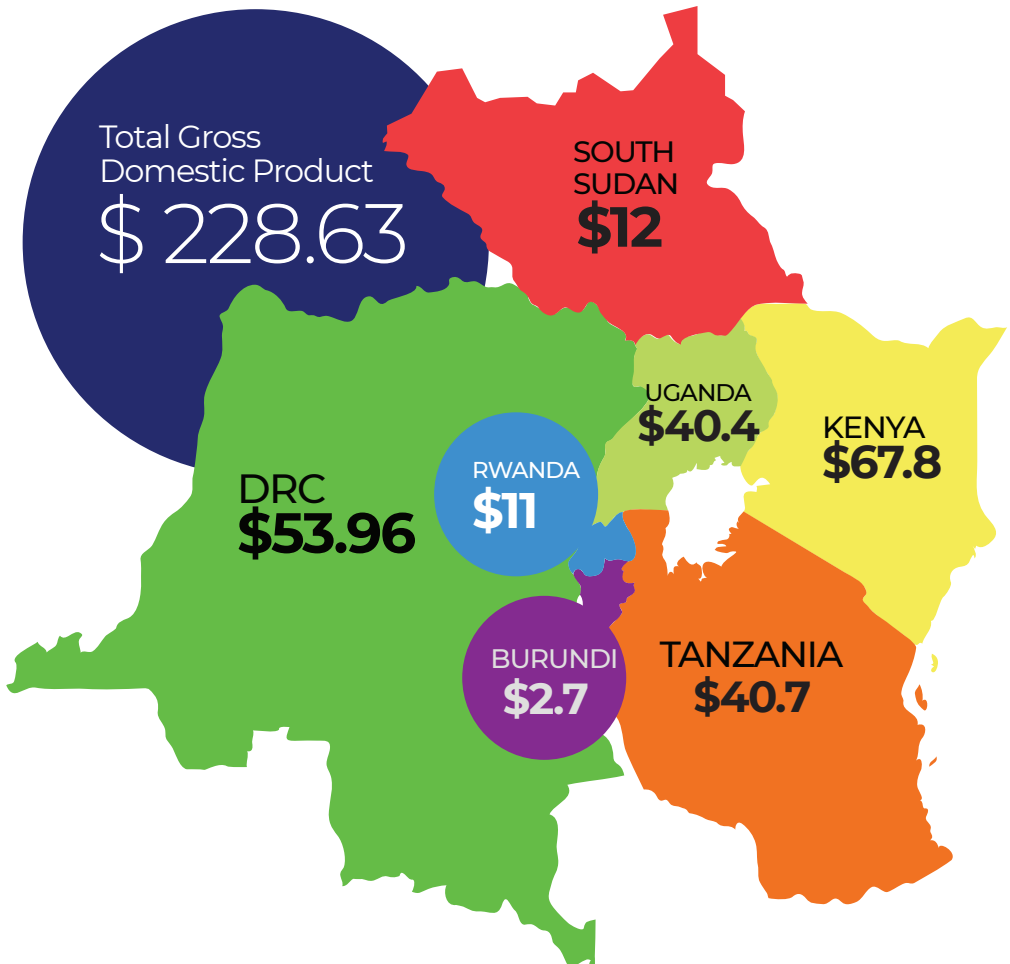
60

80

100

Gross Domestic Product (GDP)

This is the sum of gross value added by all resident producers in the economy plus any product taxes and minus any subsidies not included in the value of the products

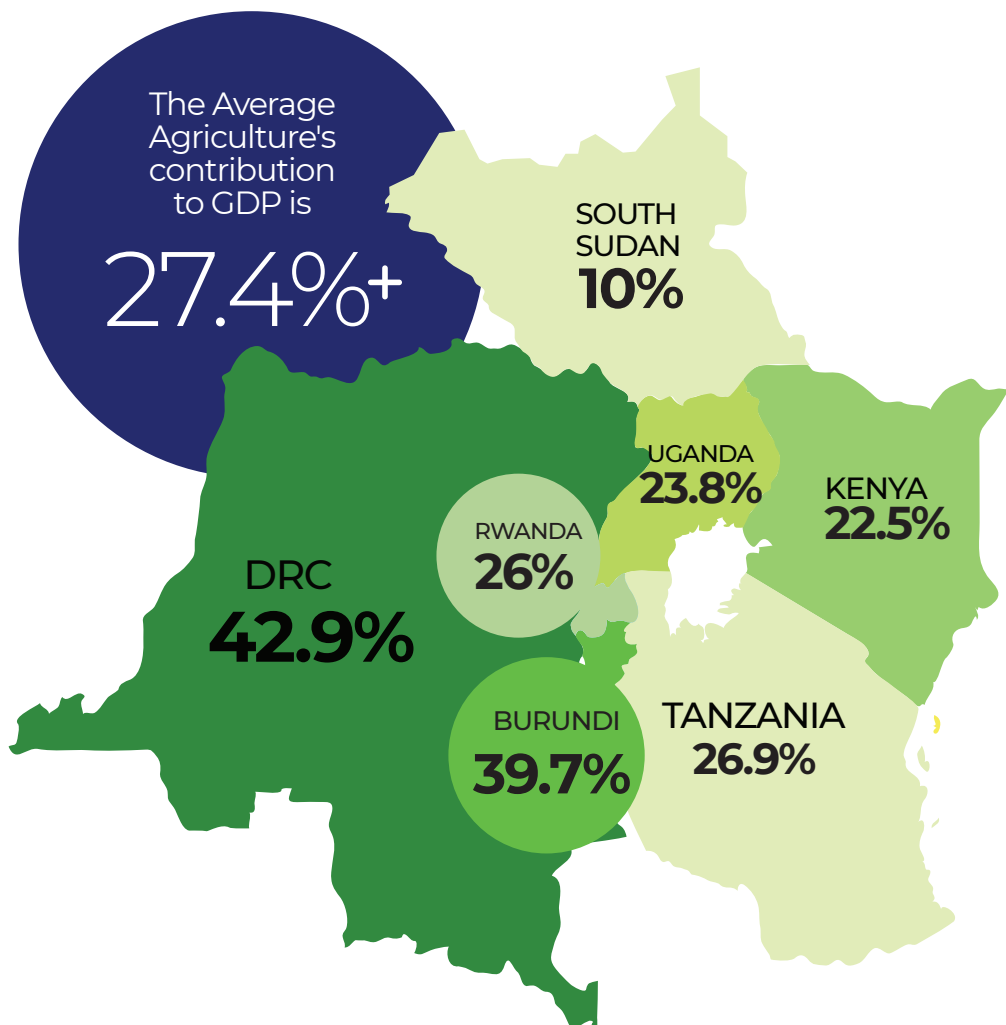


Agriculture's contribution to GDP

is the percentage of GDP the Agriculture sector contributes to the development of a country.

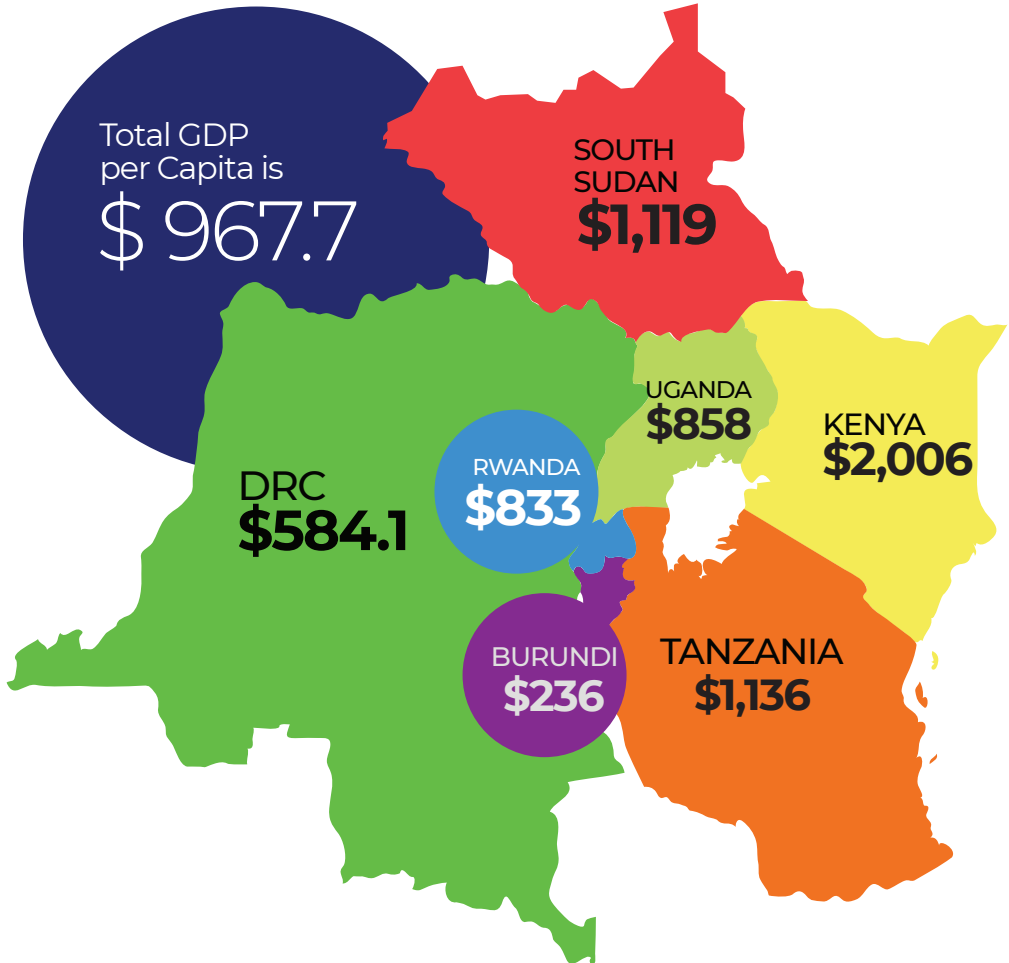
The Average
Agriculture's
contribution
to GDP is

27.4%⁺



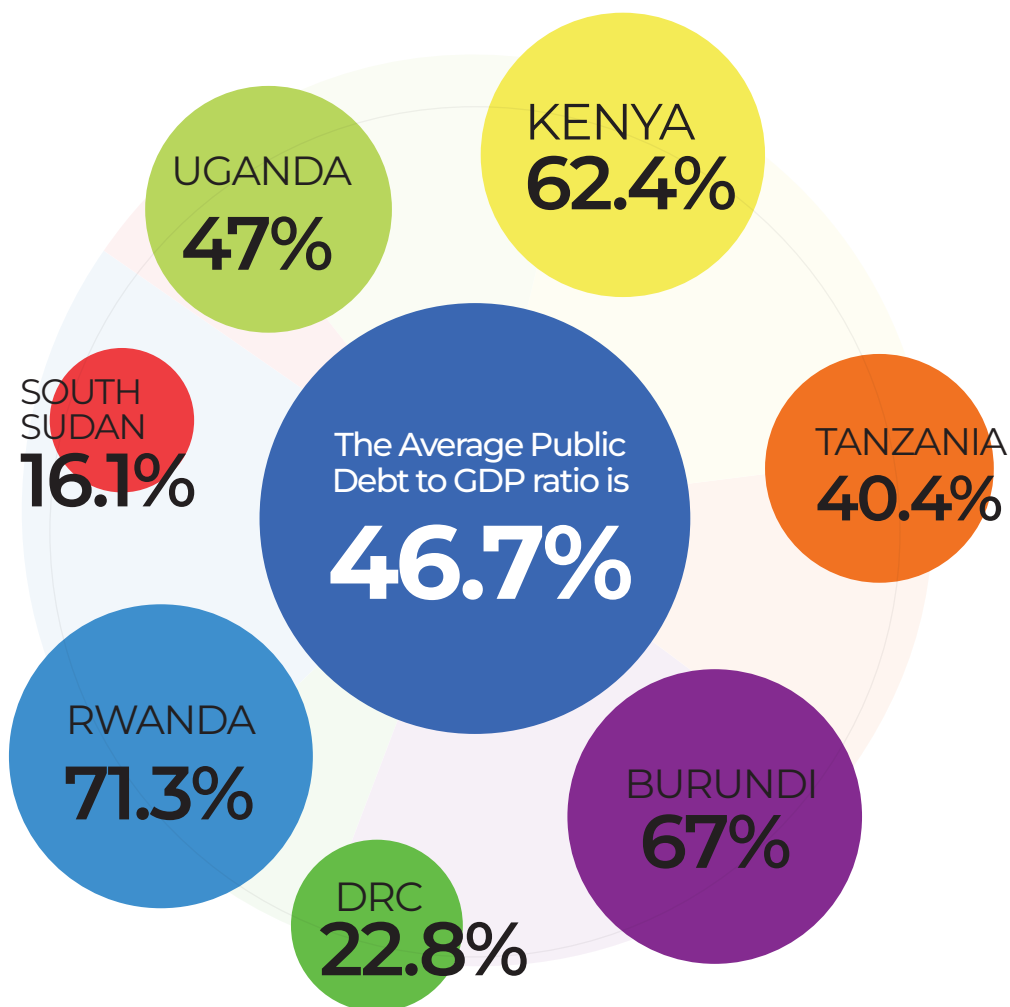
GDP Per Capita (\$USD)

This is the sum of gross value added by all resident producers in the economy plus any product taxes not included in the valuation of output, divided by mid-year population.



Public Debt to GDP ratio

This is the metric comparing a country's public debt to its gross domestic product.



Life Expectancy (Years)

This is the number of years a newborn infant would live if prevailing patterns of mortality at the time of its birth were to stay the same throughout its life.

The average
Life Expectancy
at Birth is

62.1⁺
Years

RWANDA



KENYA



TANZANIA



DRC



UGANDA



SOUTH SUDAN



BURUNDI



0 10 20 30 40 50 60 70 80

Adult literacy Rate

This is the percentage of people ages 15 and above whom can both read and write with understanding a short simple statement about their everyday life.

The average
Adult Literacy
rate is at

69.2%⁺

KENYA



TANZANIA



DRC



UGANDA



RWANDA



BURUNDI

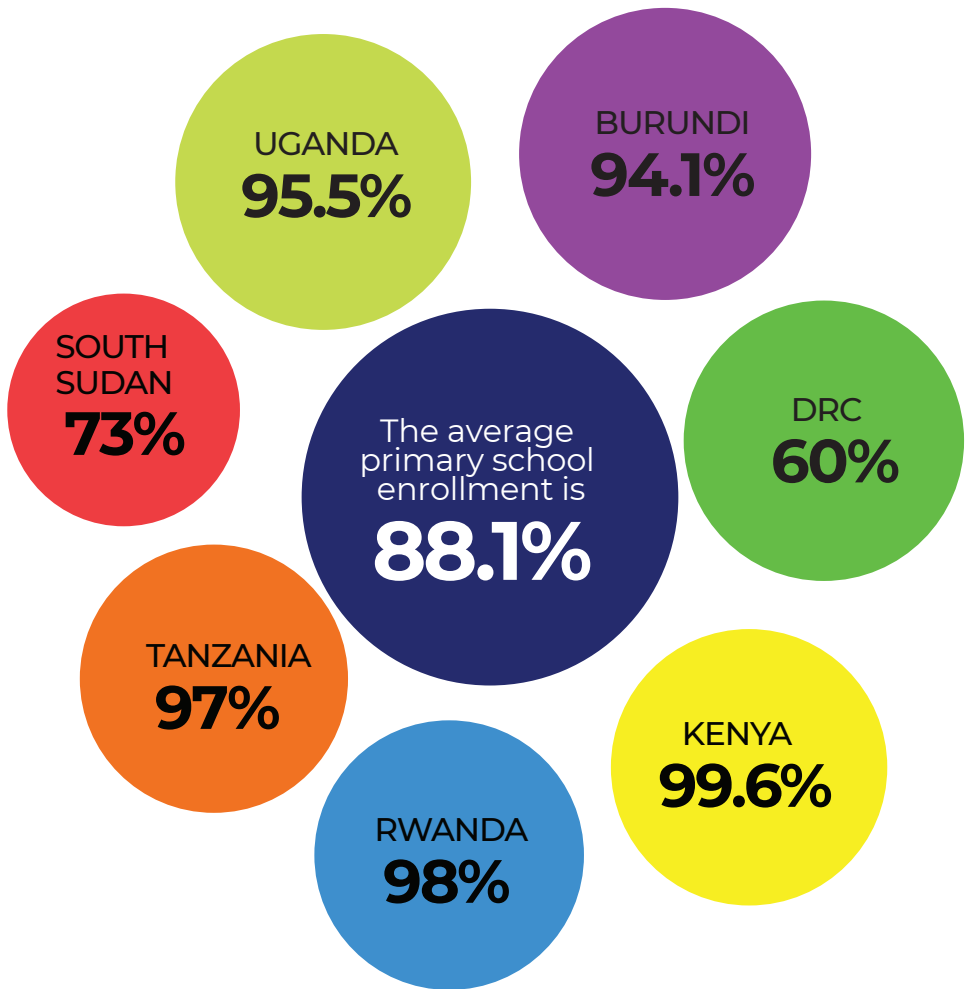


SOUTH SUDAN



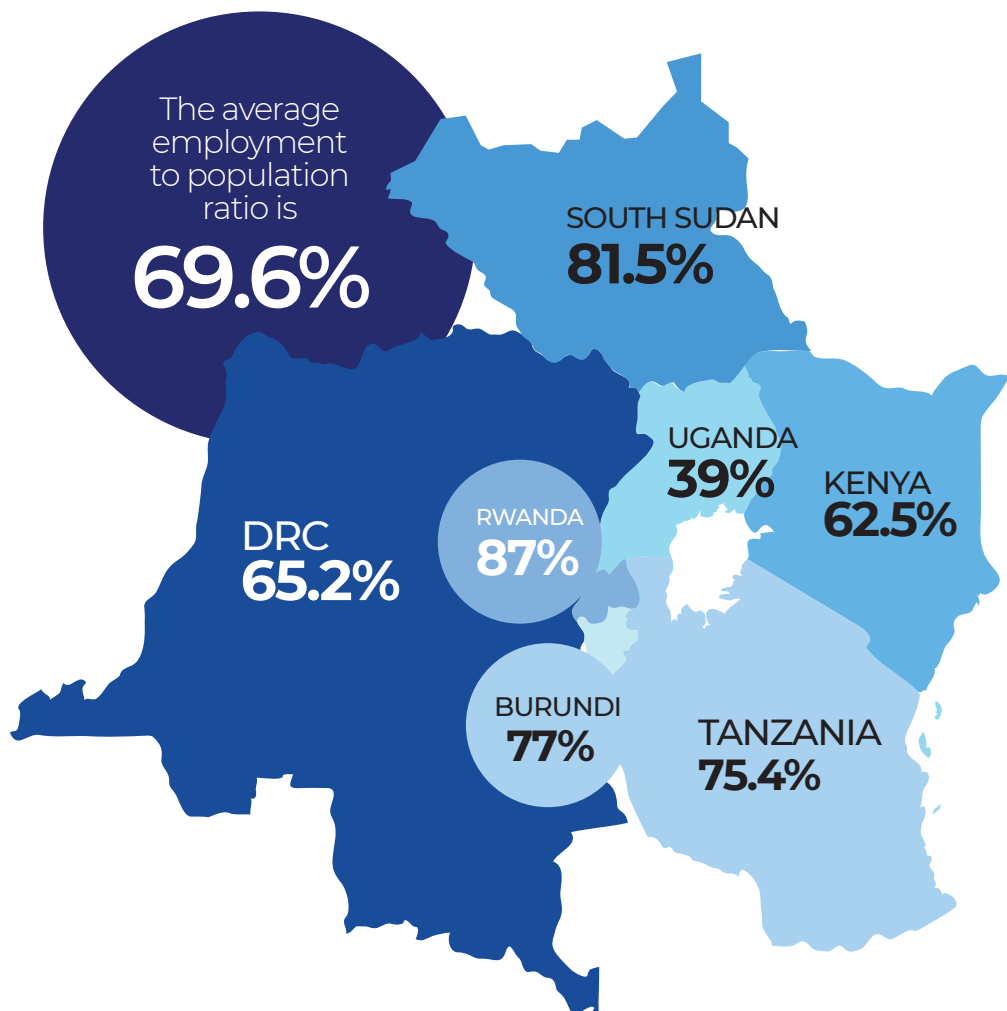
Primary School Enrollment

This is defined as the percentage of primary-school-age children (6–12) enrolled in school.



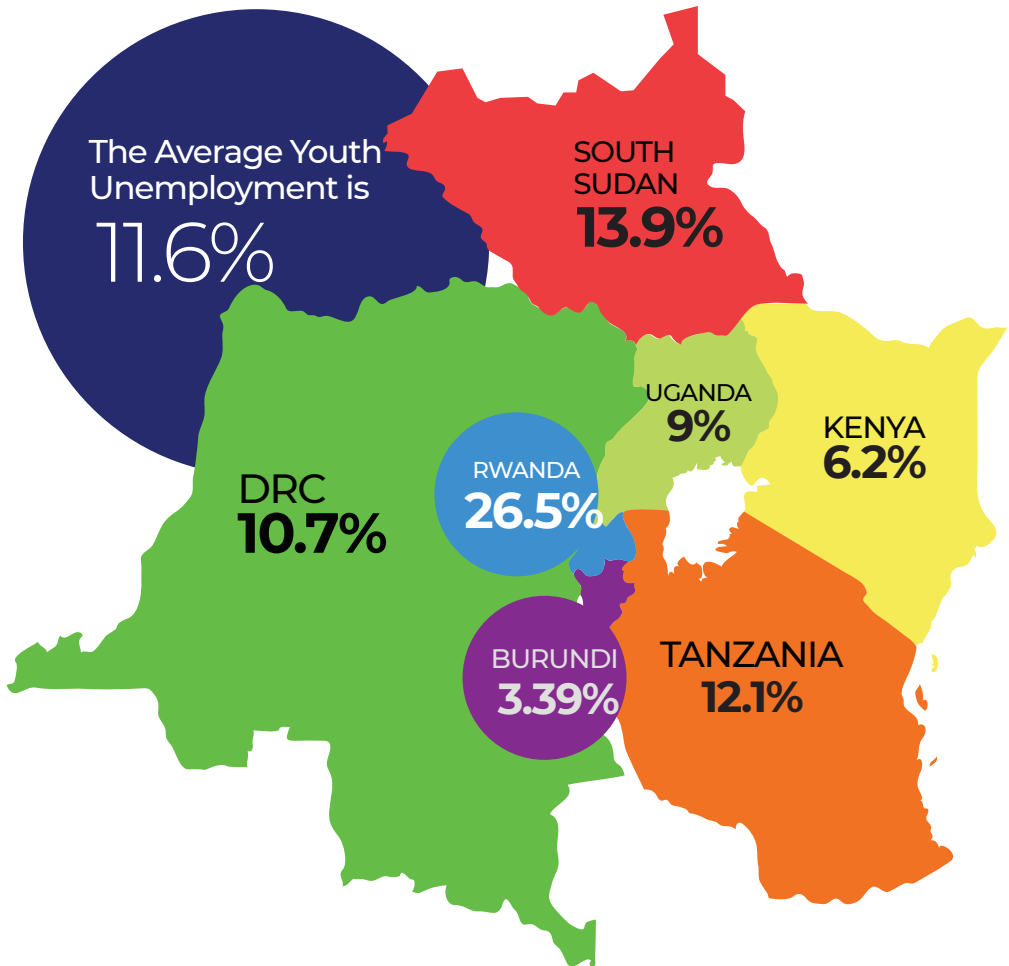
Employment to Population Ratio

This indicates how efficiently an economy provides jobs for people who want to work. .



Youth Unemployment

This refers to the share of the labor force ages 15-24 without work but available for and seeking employment.



Persons living below the poverty line

This refers to the total number of people living in poverty.

The average
persons living
below the povert line

41%⁺

DRC



SOUTH SUDAN



UGANDA



RWANDA



KENYA



TANZANIA



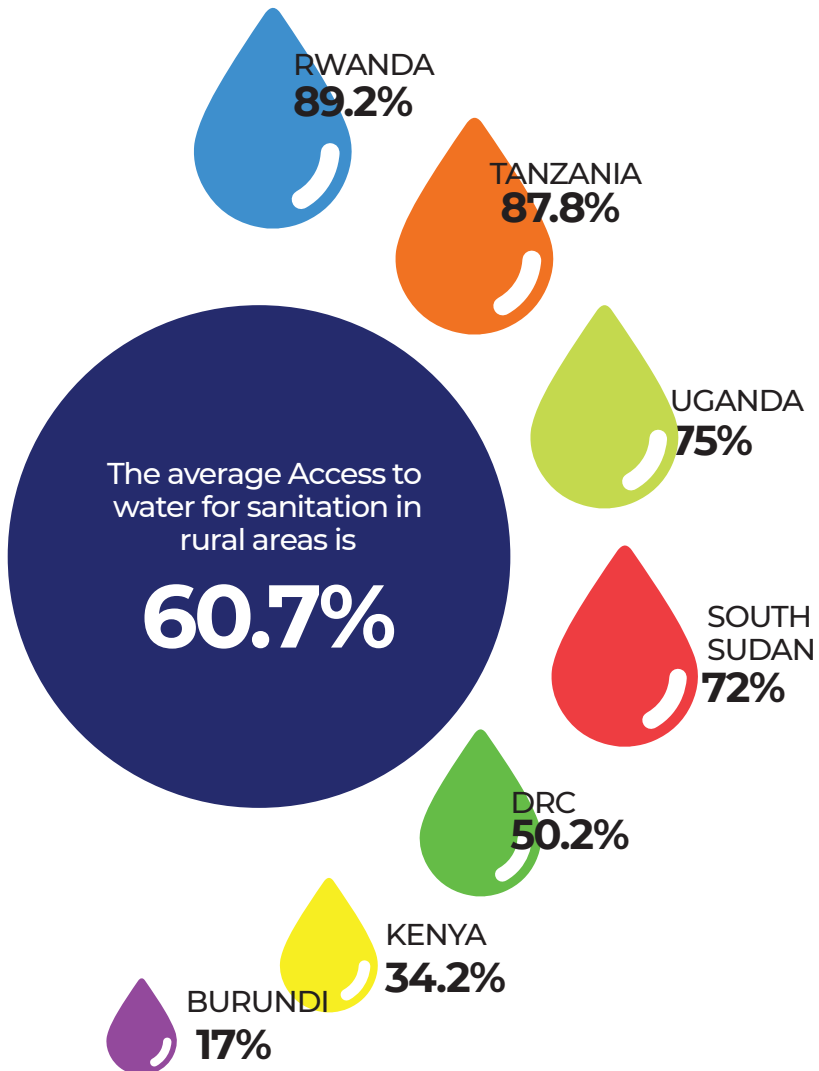
BURUNDI



0 10 20 30 40 50 60 70 80

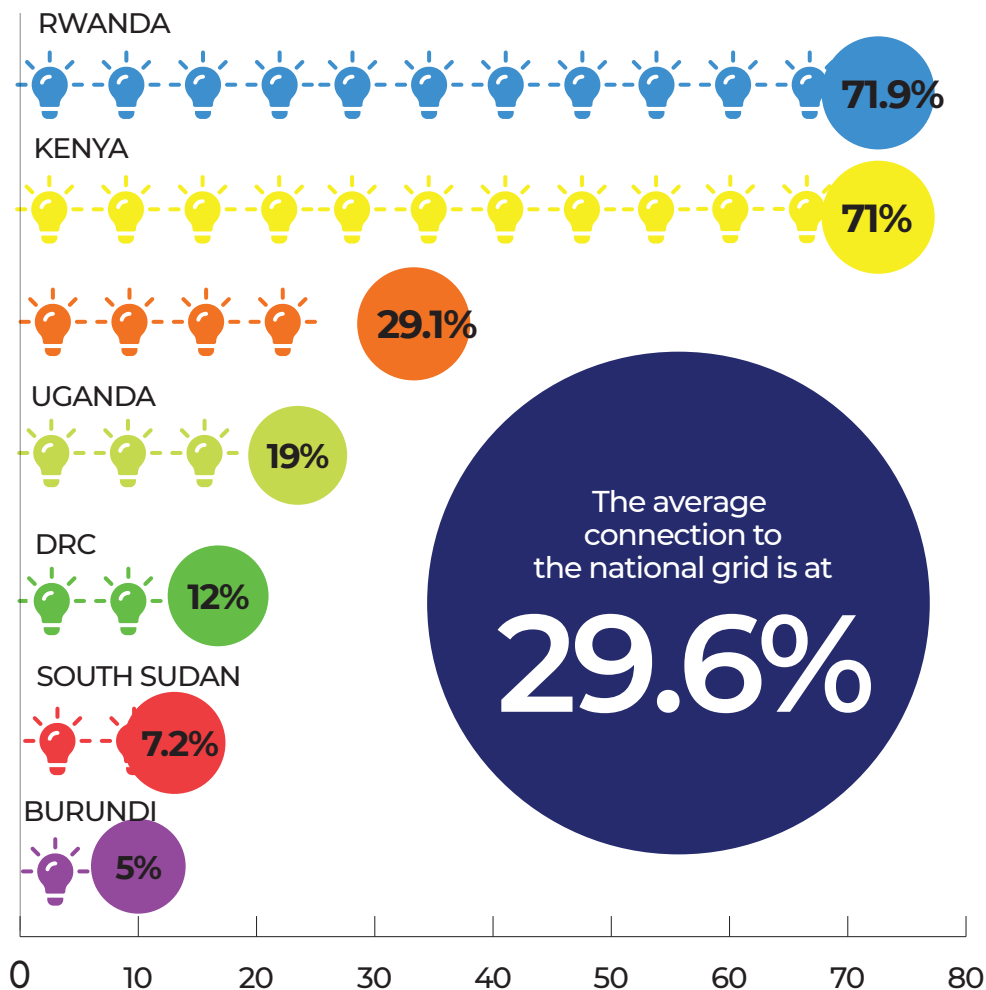
Access to water for sanitation in rural areas

This refers to the percentage of people who have access to safe drinking from an improved source that is accessible at home.



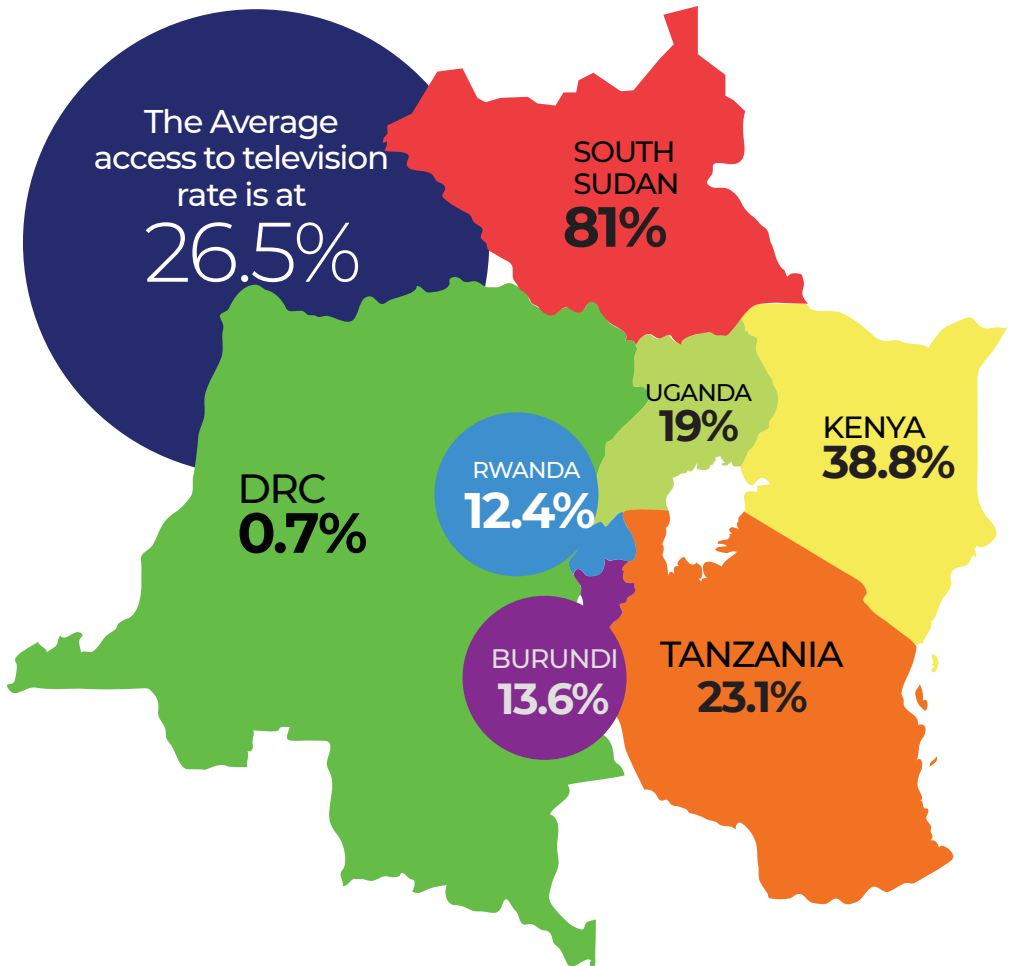
Connection to the National Grid

This is the process of generating electricity for the purpose of exporting it to the central electricity grid



Access to television

This refers to the share of households with a television set

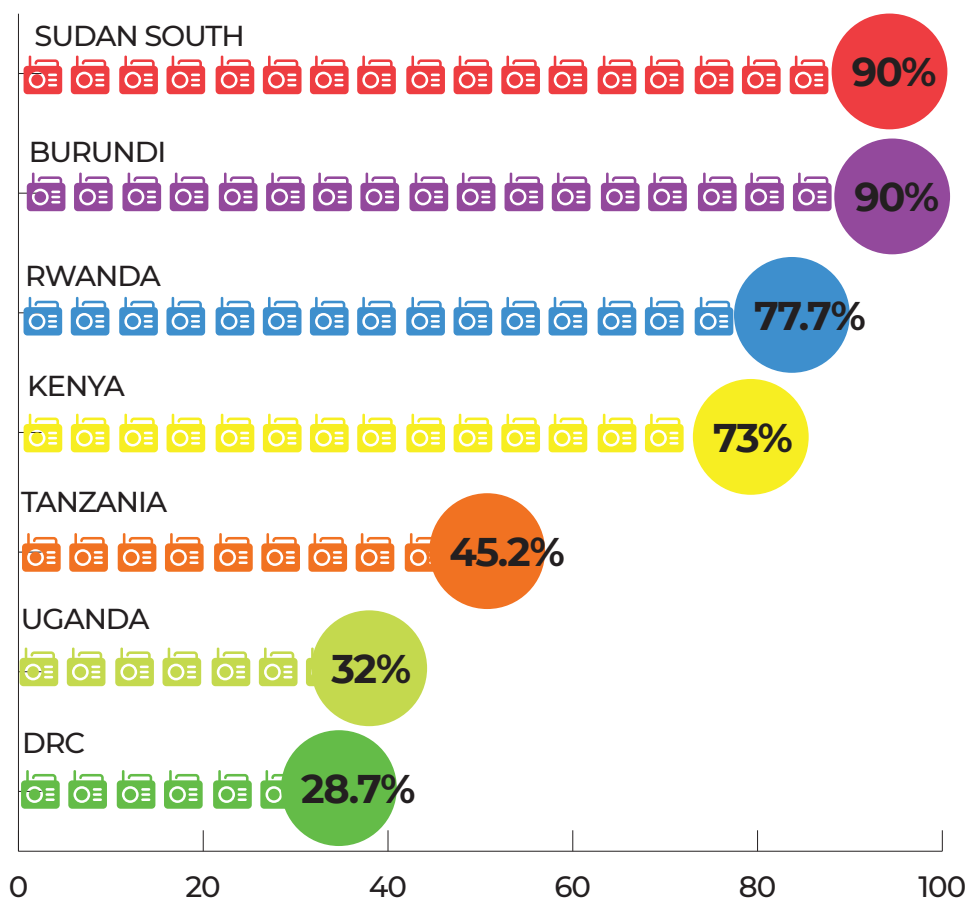


Access to radio

This refers to how many people in a country use a radio.

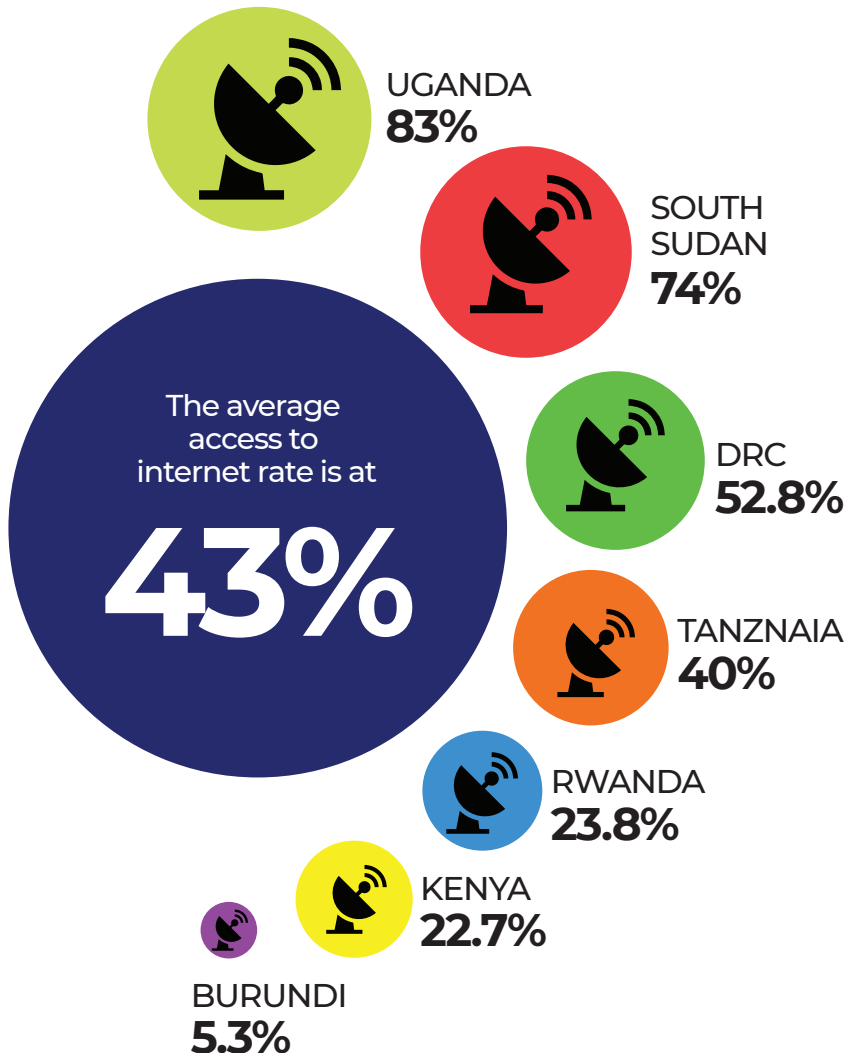
The average
accesss
to radio is at

62.3%



Access to internet

This refers to the number of people in a country who have access to the internet.



Own a mobile Phone

This refers to the percentage of population that owns a mobile phone.

The average
access to owning
a mobile phone is

70.5%

SUDAN SOUTH



TANZANIA



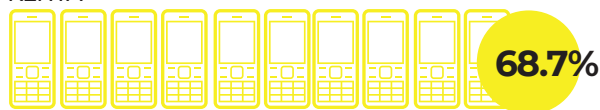
UGANDA



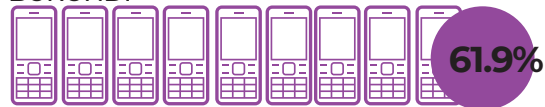
RWANDA



KENYA



BURUNDI



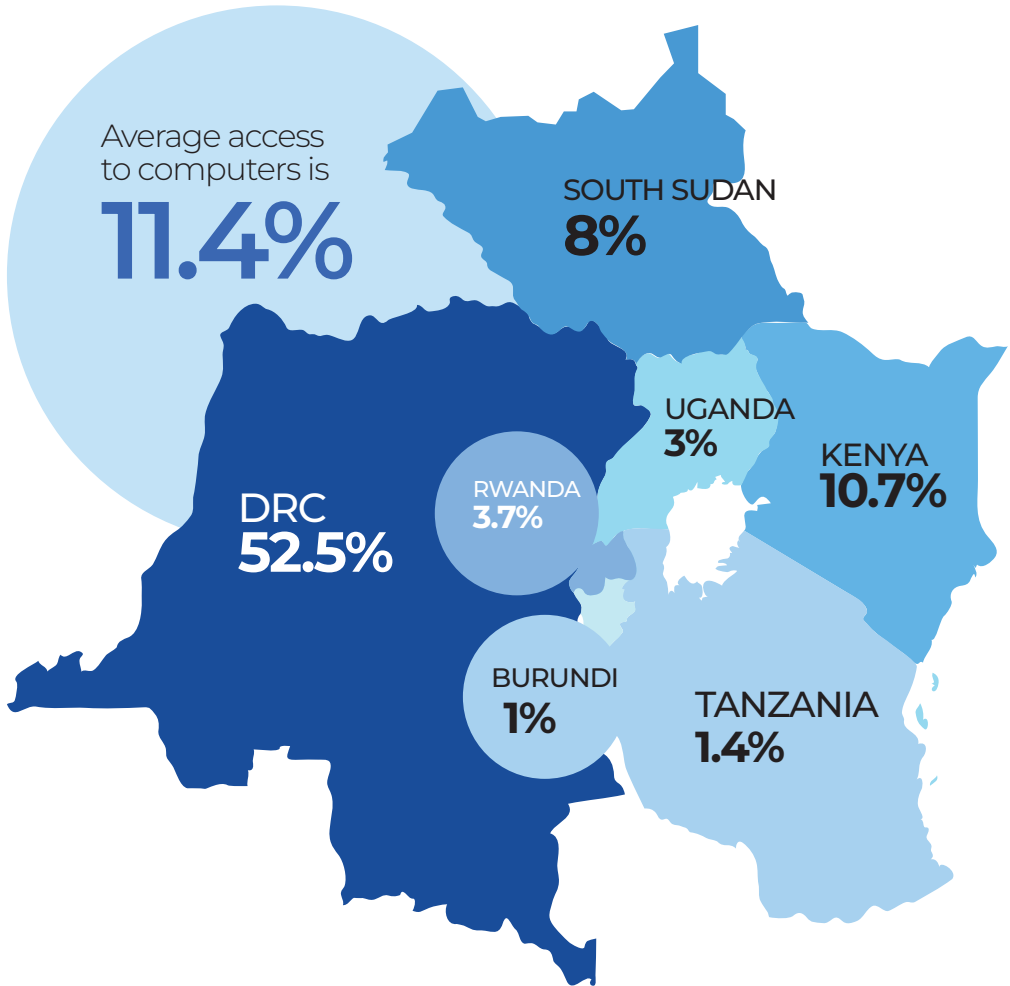
DRC



0 20 40 60 80 100

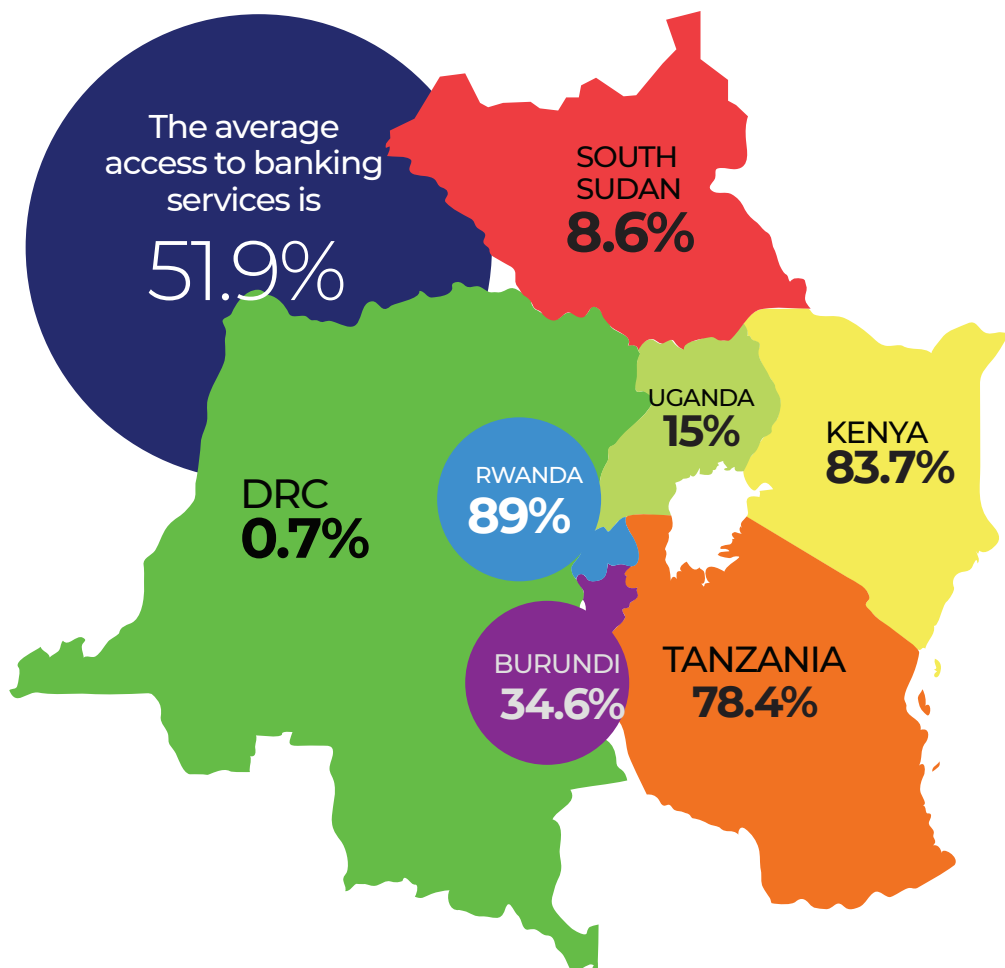
Access to computers

This refers to the percentage of people in a country who have access to a computer.



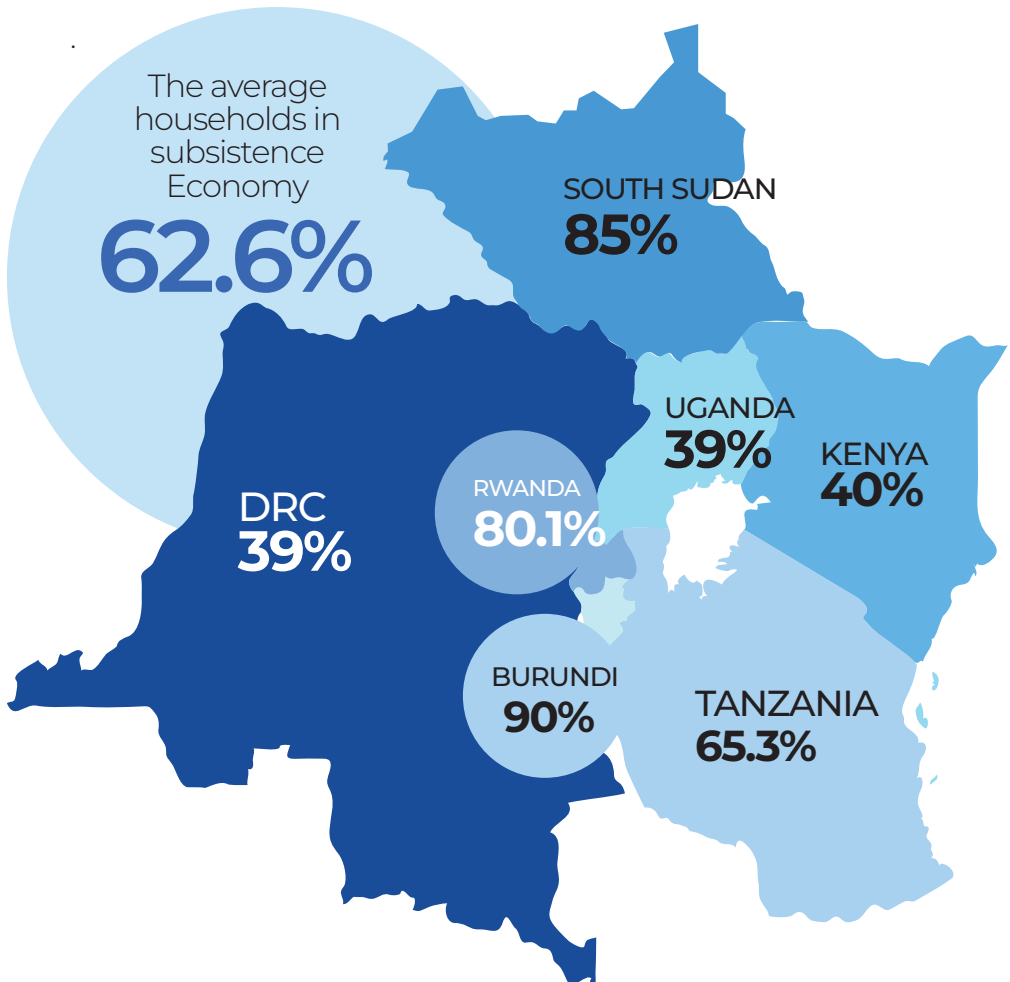
Access to banking services

This refers to the percentage of people who have access to banking services.



Households in subsistence Economy

This refers to the number of households who produce food for their own consumption and do not attempt to accumulate wealth.





EVIDENCE AND METHODS LAB

Address:

Plot 13 Kenneth Dale
Lane, Kamwokya
Kampala, Uganda

Email:

hello@evidenceandmethodslab.org

Phone:

+256 783 474784

